
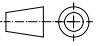
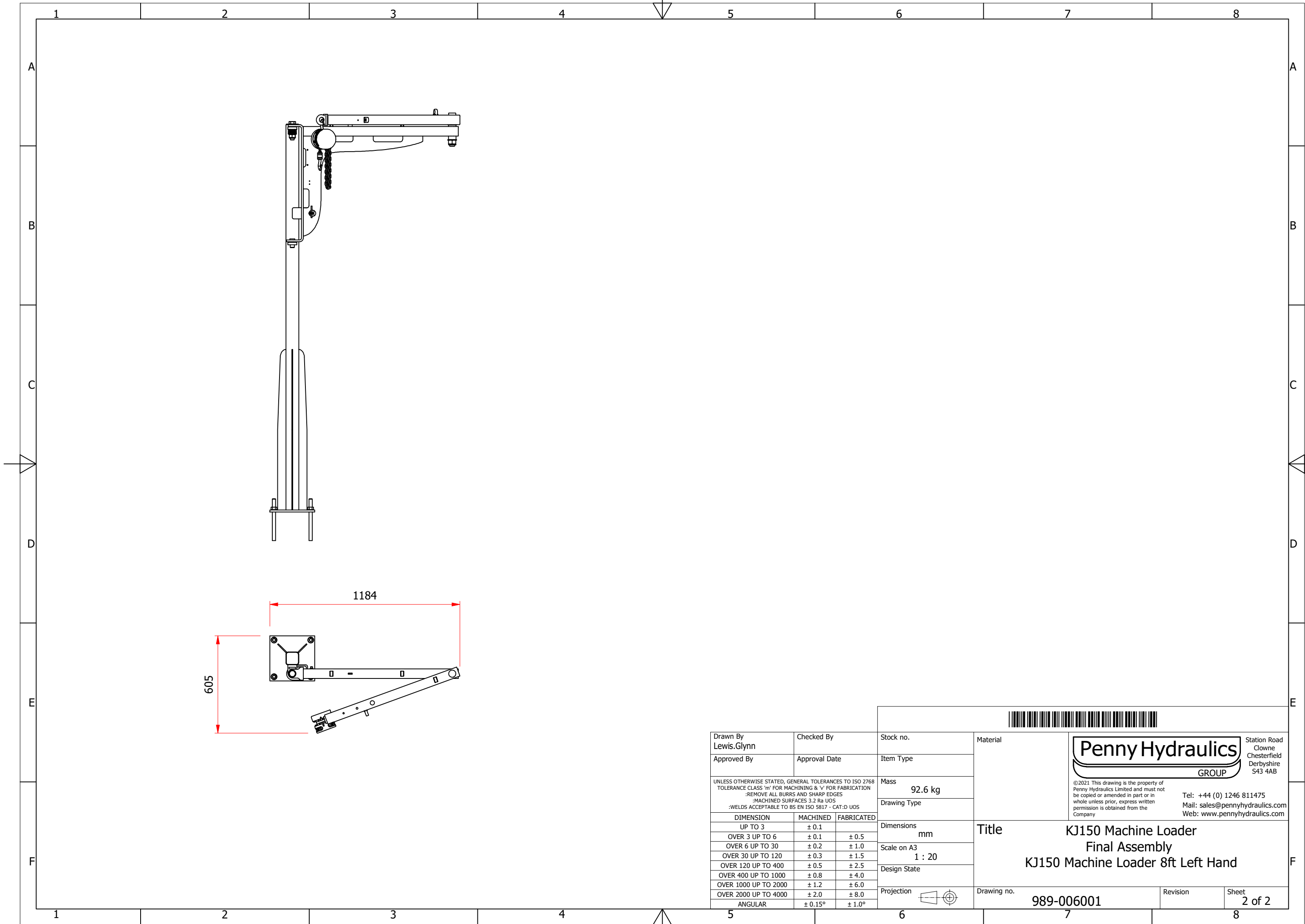


Drawn By Lewis.Glynn	Checked By	Stock no.	Material																														
Approved By	Approval Date	Item Type	 Penny Hydraulics GROUP <small>Station Road Clowne Chesterfield Derbyshire S43 4AB</small>																														
<small>UNLESS OTHERWISE STATED, GENERAL TOLERANCES TO ISO 2768 TOLERANCE CLASS 'm' FOR MACHINING & 'v' FOR FABRICATION :REMOVE ALL BURRS AND SHARP EDGES :MACHINED SURFACES 3.2 Ra UOS :WELDS ACCEPTABLE TO BS EN ISO 5817 - CAT:D UOS</small>		Mass 92.6 kg		<small>©2021 This drawing is the property of Penny Hydraulics Limited and must not be copied or amended in part or in whole unless prior, express written permission is obtained from the Company</small>																													
<table border="1"> <thead> <tr> <th>DIMENSION</th> <th>MACHINED</th> <th>FABRICATED</th> </tr> </thead> <tbody> <tr> <td>UP TO 3</td> <td>± 0.1</td> <td></td> </tr> <tr> <td>OVER 3 UP TO 6</td> <td>± 0.1</td> <td>± 0.5</td> </tr> <tr> <td>OVER 6 UP TO 30</td> <td>± 0.2</td> <td>± 1.0</td> </tr> <tr> <td>OVER 30 UP TO 120</td> <td>± 0.3</td> <td>± 1.5</td> </tr> <tr> <td>OVER 120 UP TO 400</td> <td>± 0.5</td> <td>± 2.5</td> </tr> <tr> <td>OVER 400 UP TO 1000</td> <td>± 0.8</td> <td>± 4.0</td> </tr> <tr> <td>OVER 1000 UP TO 2000</td> <td>± 1.2</td> <td>± 6.0</td> </tr> <tr> <td>OVER 2000 UP TO 4000</td> <td>± 2.0</td> <td>± 8.0</td> </tr> <tr> <td>ANGULAR</td> <td>± 0.15°</td> <td>± 1.0°</td> </tr> </tbody> </table>		DIMENSION	MACHINED	FABRICATED	UP TO 3	± 0.1		OVER 3 UP TO 6	± 0.1	± 0.5	OVER 6 UP TO 30	± 0.2	± 1.0	OVER 30 UP TO 120	± 0.3	± 1.5	OVER 120 UP TO 400	± 0.5	± 2.5	OVER 400 UP TO 1000	± 0.8	± 4.0	OVER 1000 UP TO 2000	± 1.2	± 6.0	OVER 2000 UP TO 4000	± 2.0	± 8.0	ANGULAR	± 0.15°	± 1.0°	Drawing Type	Tel: +44 (0) 1246 811475 Mail: sales@pennyhydraulics.com Web: www.pennyhydraulics.com
DIMENSION	MACHINED	FABRICATED																															
UP TO 3	± 0.1																																
OVER 3 UP TO 6	± 0.1	± 0.5																															
OVER 6 UP TO 30	± 0.2	± 1.0																															
OVER 30 UP TO 120	± 0.3	± 1.5																															
OVER 120 UP TO 400	± 0.5	± 2.5																															
OVER 400 UP TO 1000	± 0.8	± 4.0																															
OVER 1000 UP TO 2000	± 1.2	± 6.0																															
OVER 2000 UP TO 4000	± 2.0	± 8.0																															
ANGULAR	± 0.15°	± 1.0°																															
		Dimensions mm	Title KJ150 Machine Loader Final Assembly KJ150 Machine Loader 8ft Left Hand																														
		Scale on A3 1 : 20																															
		Design State	Drawing no. 989-006001																														
		Projection 		Revision																													
			Sheet 1 of 2																														



Drawn By Lewis.Glynn			Checked By		Stock no.		Material																													
Approved By			Approval Date		Item Type		Penny Hydraulics GROUP																													
UNLESS OTHERWISE STATED, GENERAL TOLERANCES TO ISO 2768 TOLERANCE CLASS 'm' FOR MACHINING & 'v' FOR FABRICATION :REMOVE ALL BURRS AND SHARP EDGES :MACHINED SURFACES 3.2 Ra UOS :WELDS ACCEPTABLE TO BS EN ISO 5817 - CAT:D UOS			Mass 92.6 kg		Drawing Type		Station Road Clowne Chesterfield Derbyshire S43 4AB																													
<table border="1"> <thead> <tr> <th>DIMENSION</th> <th>MACHINED</th> <th>FABRICATED</th> </tr> </thead> <tbody> <tr> <td>UP TO 3</td> <td>± 0.1</td> <td></td> </tr> <tr> <td>OVER 3 UP TO 6</td> <td>± 0.1</td> <td>± 0.5</td> </tr> <tr> <td>OVER 6 UP TO 30</td> <td>± 0.2</td> <td>± 1.0</td> </tr> <tr> <td>OVER 30 UP TO 120</td> <td>± 0.3</td> <td>± 1.5</td> </tr> <tr> <td>OVER 120 UP TO 400</td> <td>± 0.5</td> <td>± 2.5</td> </tr> <tr> <td>OVER 400 UP TO 1000</td> <td>± 0.8</td> <td>± 4.0</td> </tr> <tr> <td>OVER 1000 UP TO 2000</td> <td>± 1.2</td> <td>± 6.0</td> </tr> <tr> <td>OVER 2000 UP TO 4000</td> <td>± 2.0</td> <td>± 8.0</td> </tr> <tr> <td>ANGULAR</td> <td>± 0.15°</td> <td>± 1.0°</td> </tr> </tbody> </table>			DIMENSION	MACHINED	FABRICATED	UP TO 3	± 0.1		OVER 3 UP TO 6	± 0.1	± 0.5	OVER 6 UP TO 30	± 0.2	± 1.0	OVER 30 UP TO 120	± 0.3	± 1.5	OVER 120 UP TO 400	± 0.5	± 2.5	OVER 400 UP TO 1000	± 0.8	± 4.0	OVER 1000 UP TO 2000	± 1.2	± 6.0	OVER 2000 UP TO 4000	± 2.0	± 8.0	ANGULAR	± 0.15°	± 1.0°	Dimensions mm		Title KJ150 Machine Loader Final Assembly KJ150 Machine Loader 8ft Left Hand	
DIMENSION	MACHINED	FABRICATED																																		
UP TO 3	± 0.1																																			
OVER 3 UP TO 6	± 0.1	± 0.5																																		
OVER 6 UP TO 30	± 0.2	± 1.0																																		
OVER 30 UP TO 120	± 0.3	± 1.5																																		
OVER 120 UP TO 400	± 0.5	± 2.5																																		
OVER 400 UP TO 1000	± 0.8	± 4.0																																		
OVER 1000 UP TO 2000	± 1.2	± 6.0																																		
OVER 2000 UP TO 4000	± 2.0	± 8.0																																		
ANGULAR	± 0.15°	± 1.0°																																		
			Scale on A3 1 : 20		Design State		Tel: +44 (0) 1246 811475 Mail: sales@pennyhydraulics.com Web: www.pennyhydraulics.com																													
			Projection		Drawing no. 989-006001		Revision																													
					Sheet 2 of 2																															