

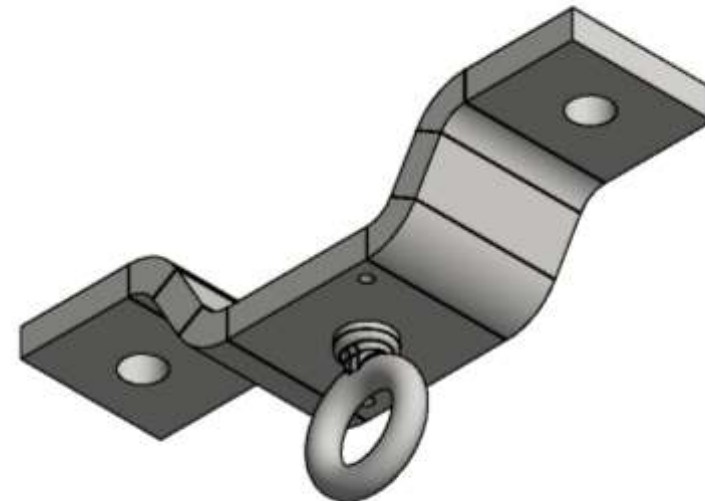
TECHNICAL DOCUMENT



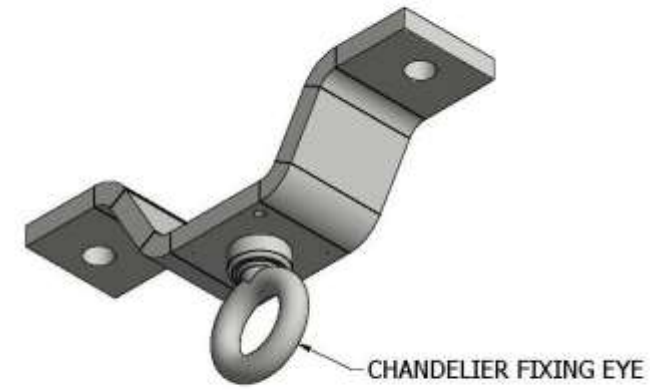
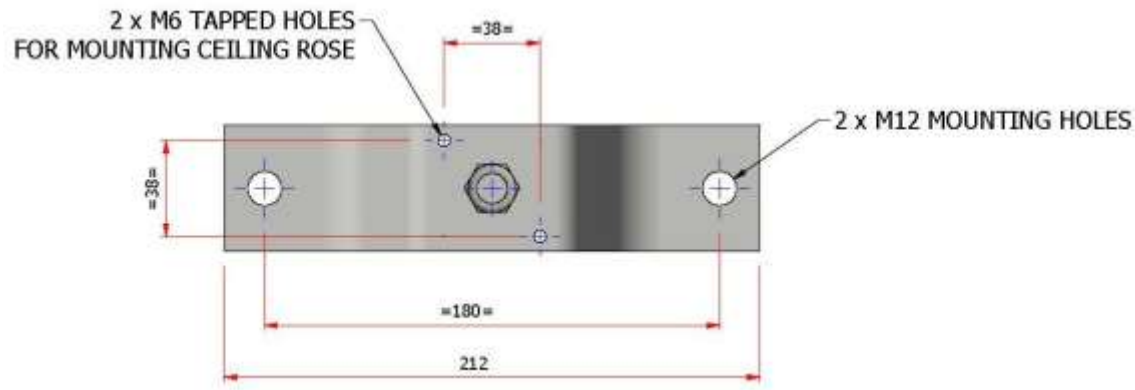
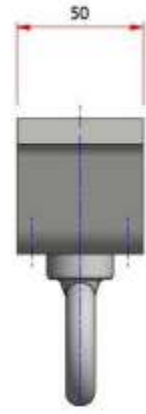
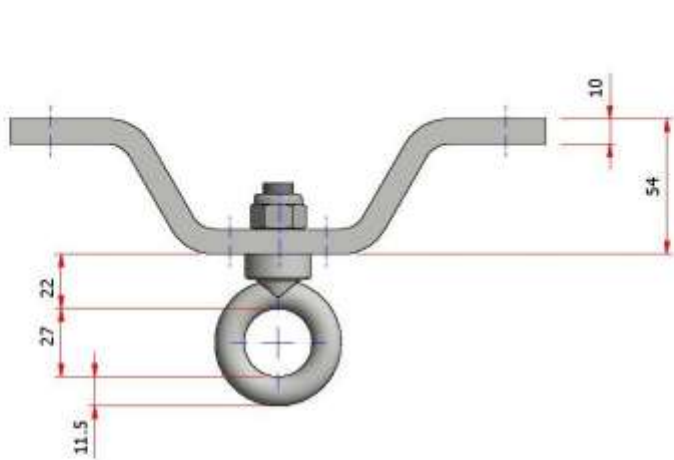
RLF-250

FIXED CEILING ANCHOR

MAX LOAD: 250 kg (551 lbs)
LOAD TESTED AND CERTIFIED
SKU: 011-006020



Overview/Dimensions



Technical specifications

SKU	011-006020
Safe working load (SWL)	250 kg (551 lbs)
Fixings	2 x fixing holes for M12
Material	Mild steel
Finish	Black primer
Mass	0.97 kg (2.1 lbs)
Markings	SWL, Serial number, Manufacturer, CE Mark
Supplied documentation	Individual load test certificate, Declaration of Conformity

Contact Penny Hydraulics if a different specification is required.