

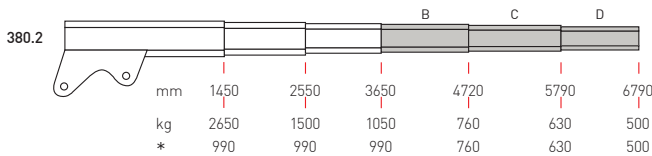
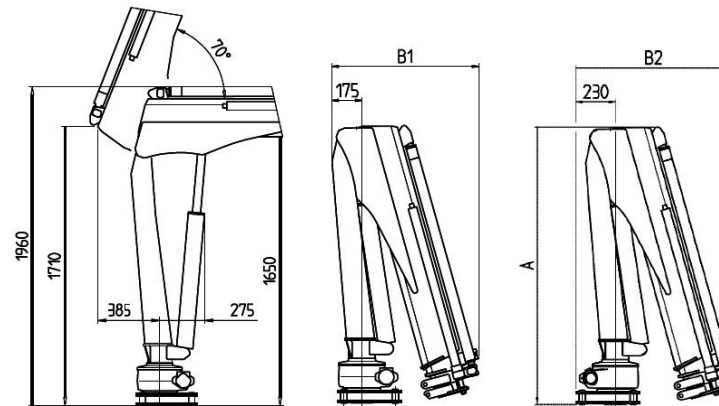
PH380.2

TECHNICAL DATA	PH380.2
Lifting capacity	37kNm
Max. lifting height from crane base	5000mm
Max. working slope	5°
Max. working pressure	220bar
Suggested oil flow	12-15l per min.
Electro-hydraulic power unit supply voltage	12V/24V
Max. absorption electro-hydraulic power unit (12V)	260A
Max. absorption electro-hydraulic power unit (24V)	160A
Hydraulic oil tank capacity (H version)	15l
Hydraulic oil tank capacity (electric version)	11l

CRANE WEIGHTS	kg
PH380.2	310-330
Base with extendable stabilisers	158-160

DIMENSIONS

CRANE	A	B1	B2
PH 380.2	1630	870	920



Hydraulic extension
 Standard manual extension
 Optional manual extension
 * "D" version



Penny Hydraulics Limited

Station Road | Clowne | Chesterfield | Derbyshire | S43 4AB | United Kingdom
 t +44 (0) 1246 811475 | f +44 (0) 1246 810403

w www.pennyhydraulics.com | e sales@pennyhydraulics.com