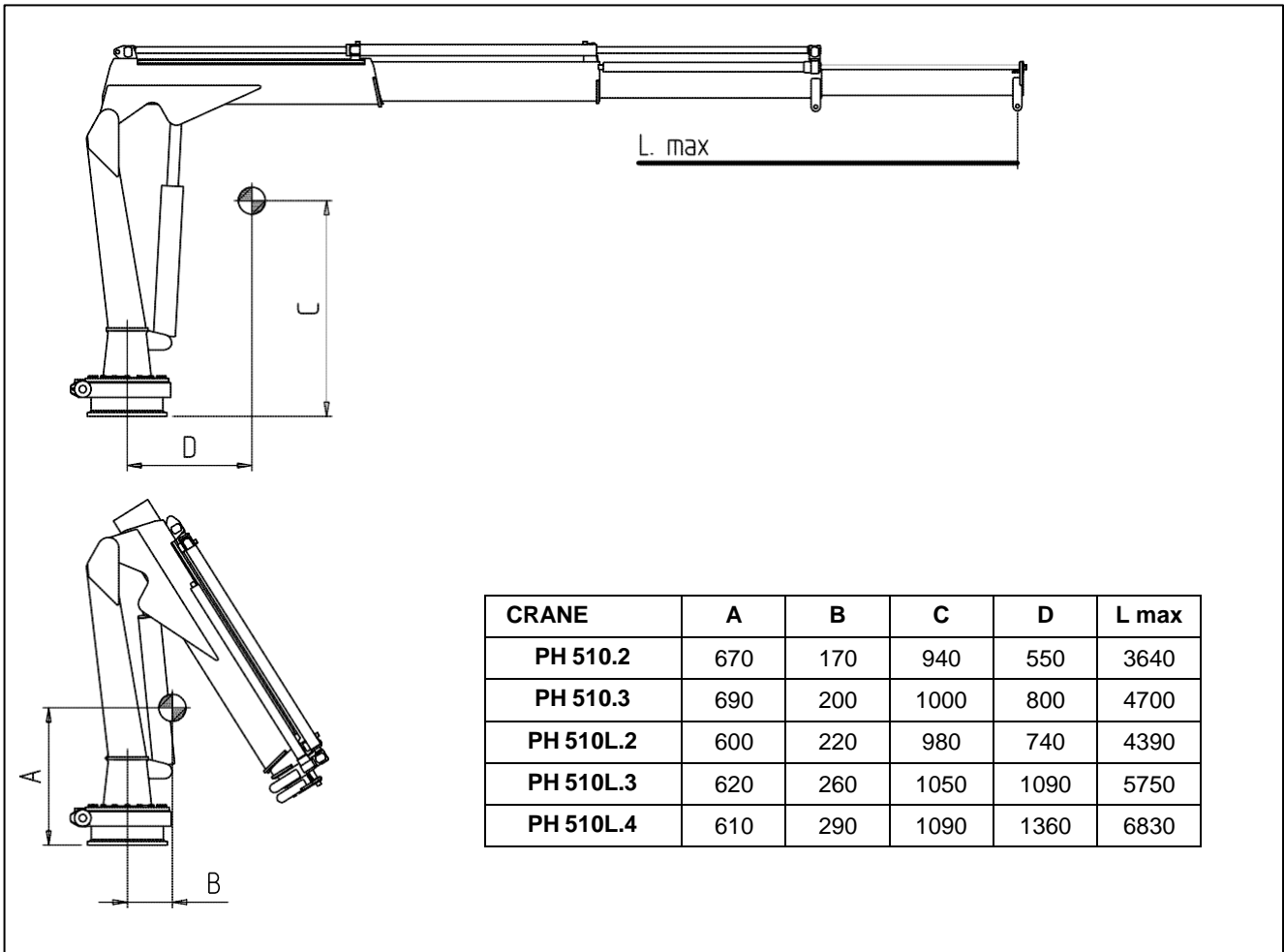
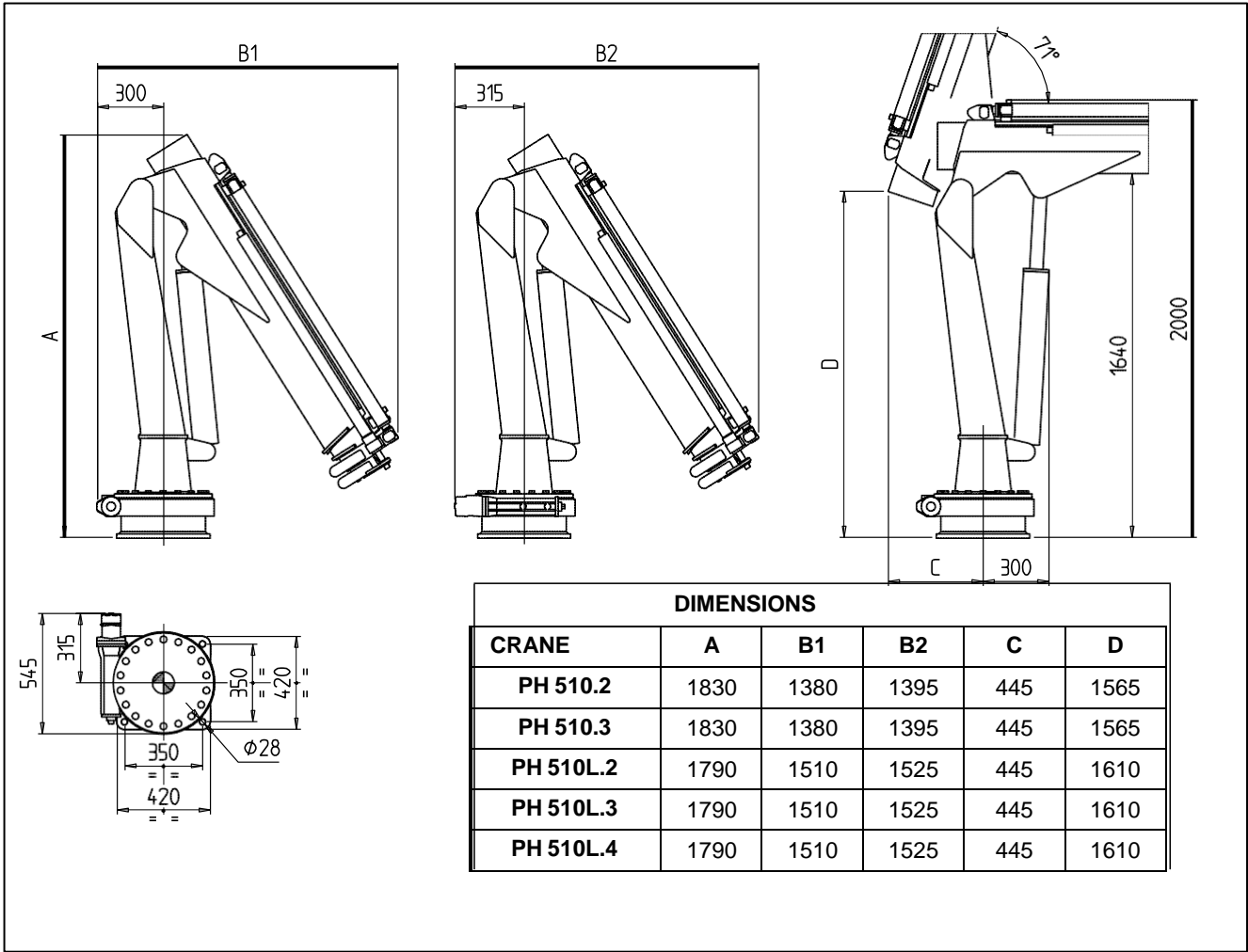




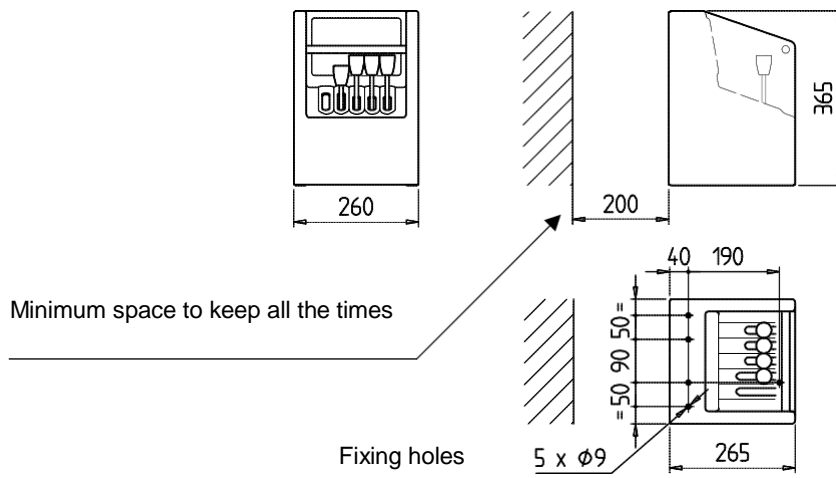
TECHNICAL SHEET



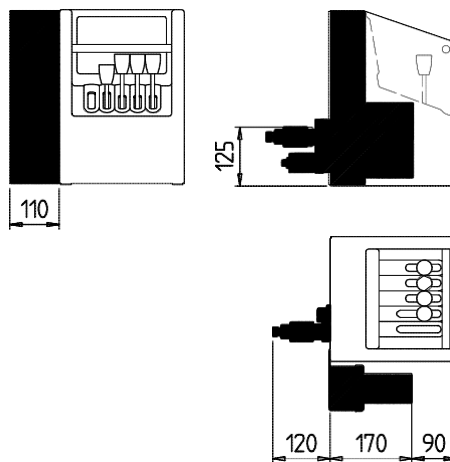
PH510



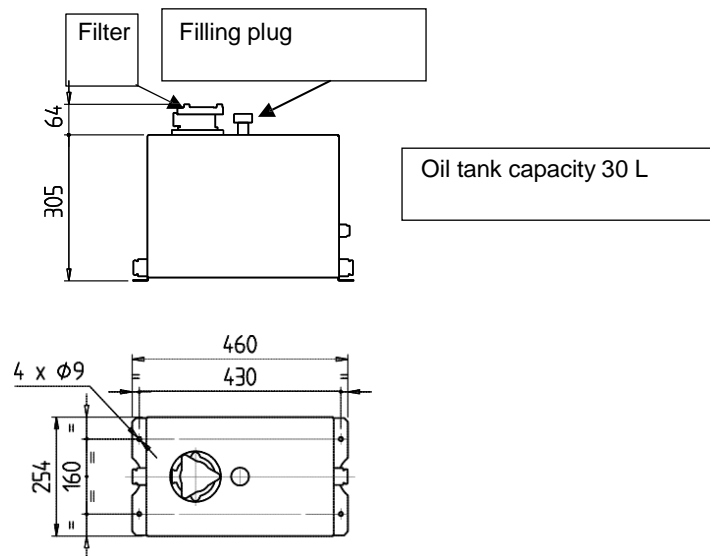
Standard control station



Control station with remote control



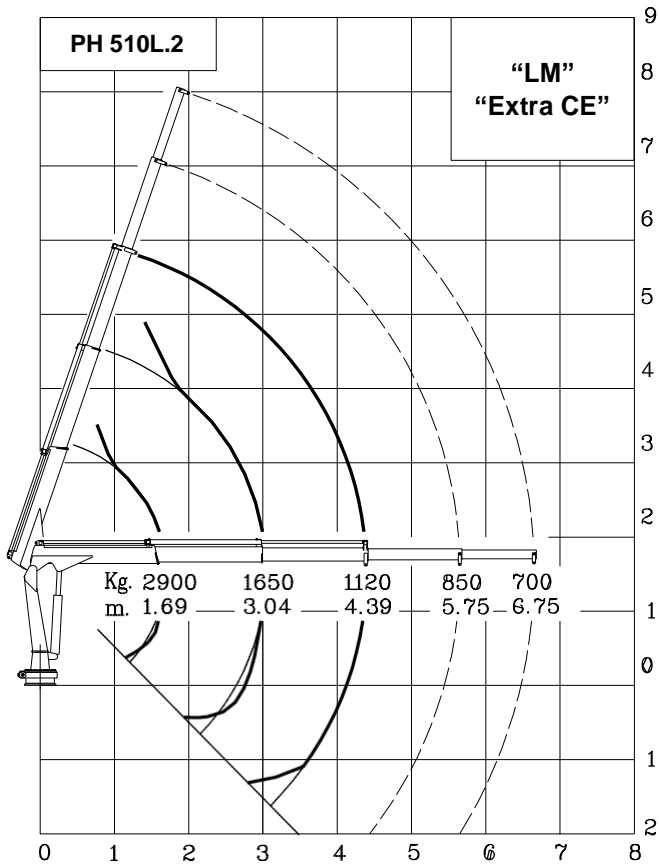
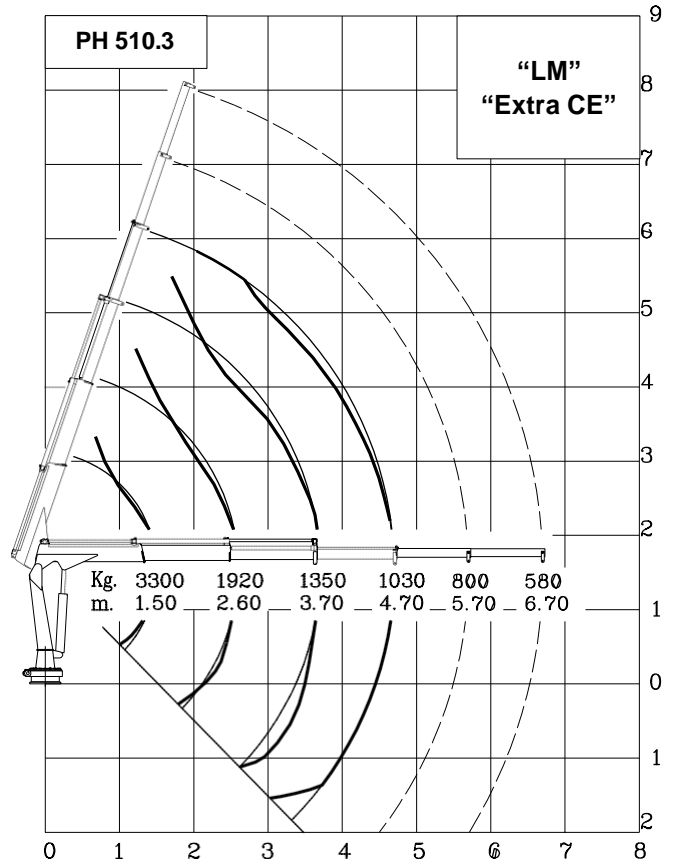
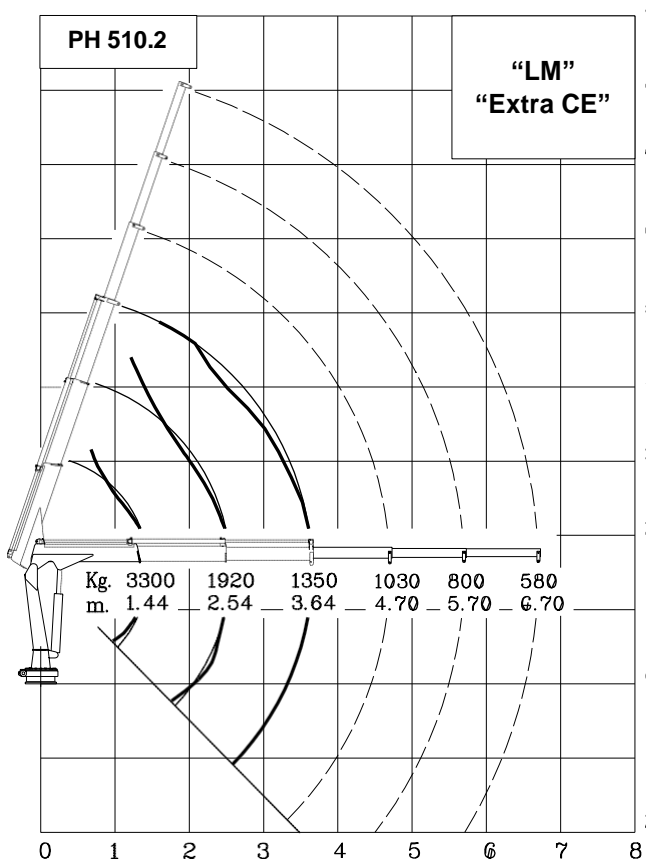
Oil tank



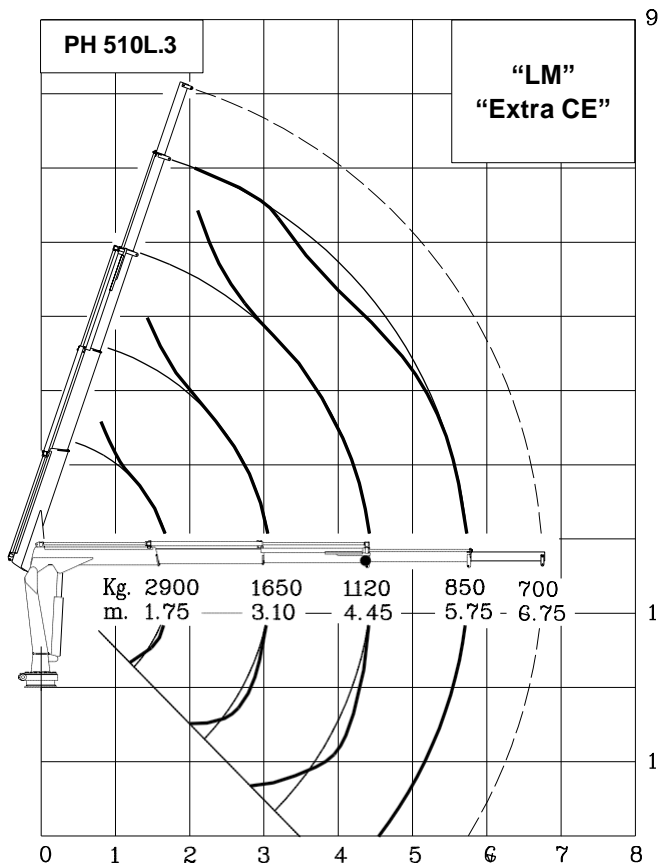
TECHNICAL DATA	U.M.	VERSION				
		PH 510.2	PH 510.3	PH 510L.2	PH 510L.3	PH 510L.4
CRANE RATING	kNm	48				
STANDARD EXTENSIONS Nr. (HYDRAULICS)	N°	2	3	2	3	4
STANDARD OUTREACH	m	3.64	4.70	4.39	5.75	6.83
SLEWING ANGLE	°	330°				
MAXIMUM ANGLE SLOPE	°	5°				
SLEWING TORQUE	kNm	8				
MAX. LIFTING HEIGHT FROM CRANE BASE	m	5.00	6.00	5.70	7.00	8.00
SUGGESTED OIL FLOW	l/min	15÷18				
MAX. WORKING PRESSURE	bar	230				
CRANE WEIGHT	kg	465	500	485	530	565

WINCH SPECIFICATIONS	U.M.	
MAX. WINCH SINGLE LINE CAPACITY (3 rd LAYER)	kg	990 ("CE") 1000 (EXTRA "CE")
ROPE RAISING SPEED (3 rd LAYER)	m/min	15
ROPE LOWERING SPEED (3 rd LAYER)	m/min	20
ROPE DIAMETER	mm	8
ROPE LENGTH	m	30
WINCH KIT WEIGHT	kg	75

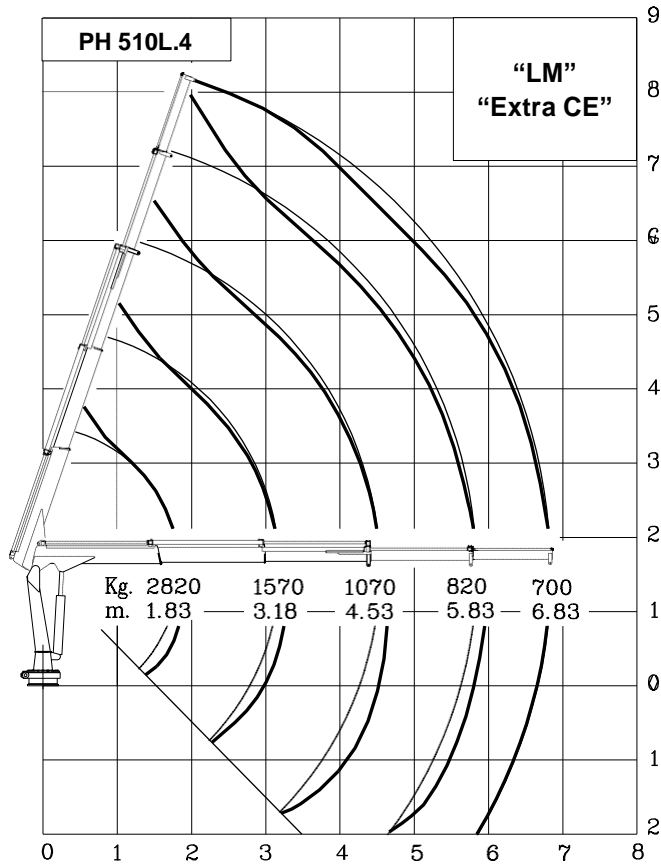
OPERATING TIMES												
SLEW. (rpm)	LIFTING (sec)	LOWER. (sec)	EXTENSION OUT (sec)					EXTENSION IN (sec)				
			510.2	510.3	510L.2	510L.3	510L.4	510.2	510.3	510L.2	510L.3	510L.4
2.3	21	13	17	22	20	31	36	10	12	12	18	21



9
8
7
6
5
4
3
2
1
0



In the "LM" version, the mechanical extensions are not controlled by the load limiter.



Lifting class **HC1 – HD4/B3**