



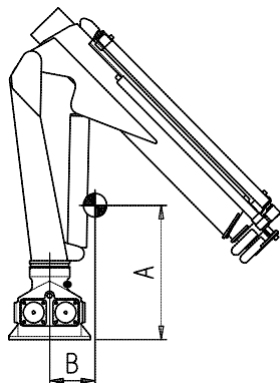
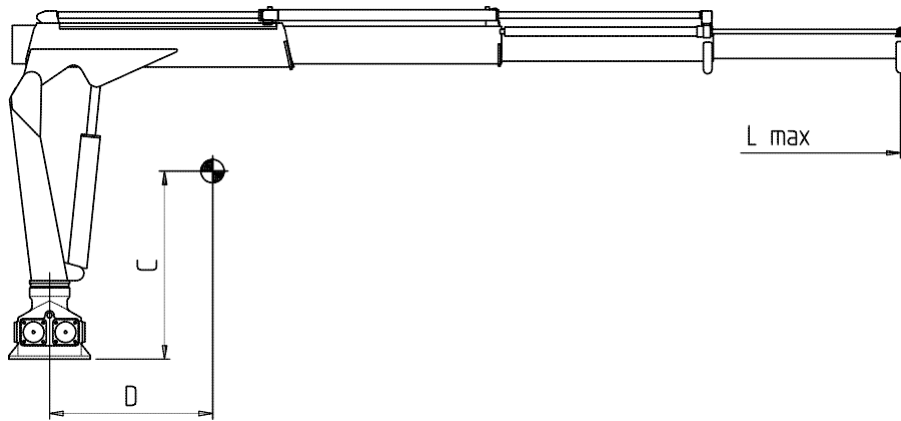
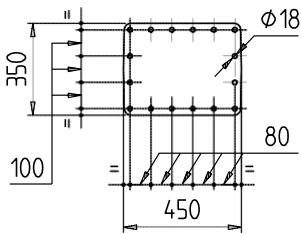
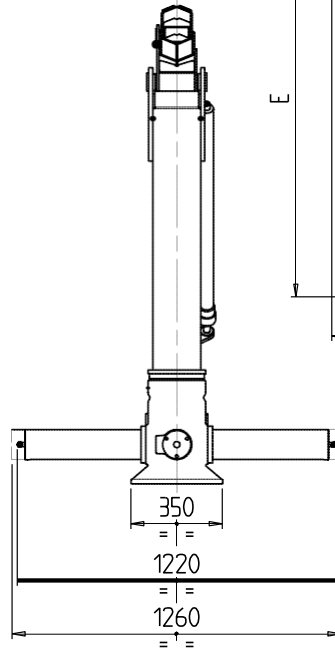
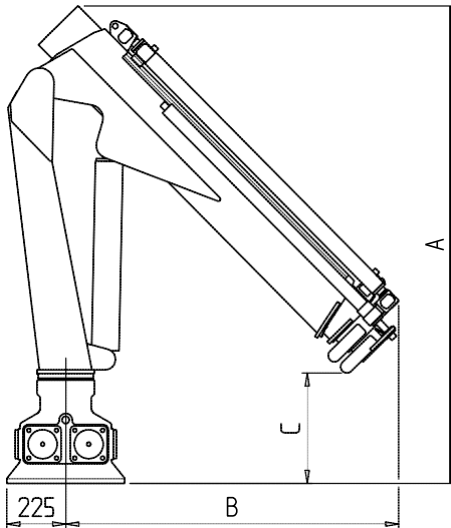
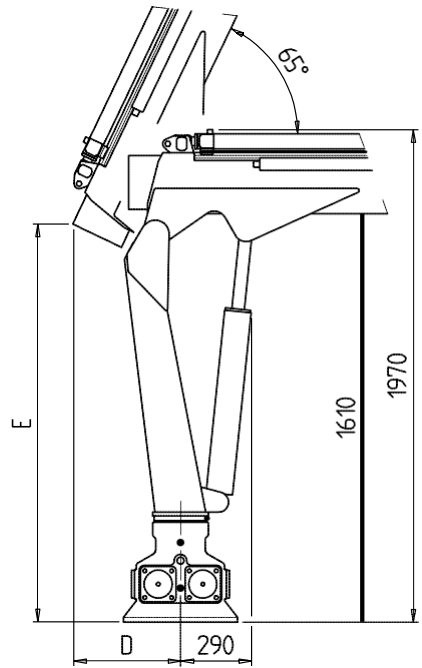
TECHNICAL SHEET



PH 500

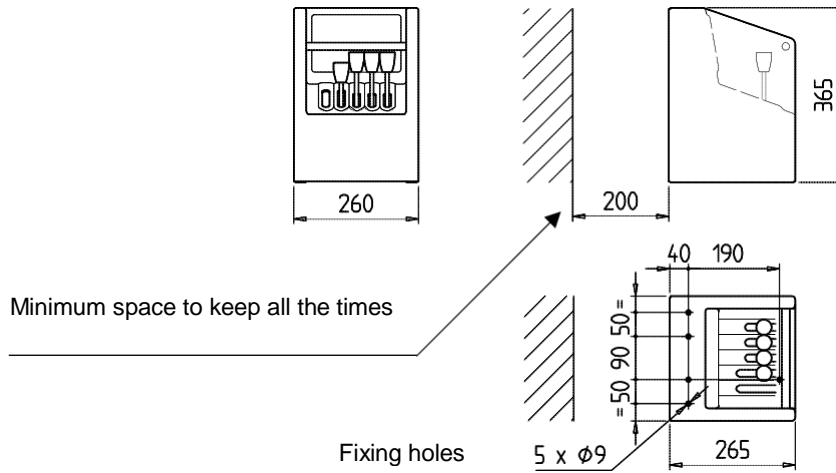
DIMENSIONS

| CRANE | A | B | C | D | E |
|-----------|------|------|-----|-----|------|
| PH 500.2 | 1830 | 1280 | 460 | 430 | 1570 |
| PH 500.3 | 1830 | 1280 | 420 | 430 | 1570 |
| PH 500L.2 | 1800 | 1450 | 280 | 410 | 1610 |
| PH 500L.3 | 1800 | 1450 | 240 | 410 | 1610 |
| PH 500L.4 | 1800 | 1490 | 200 | 410 | 1610 |

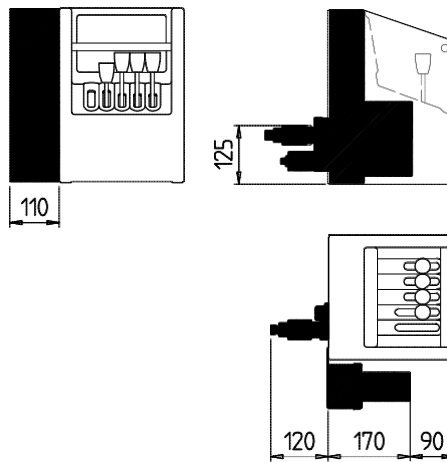


| CRANE | A | B | C | D | L max |
|-----------|-----|-----|------|------|-------|
| PH 500.2 | 710 | 200 | 920 | 550 | 3640 |
| PH 500.3 | 730 | 240 | 980 | 800 | 4700 |
| PH 500L.2 | 670 | 270 | 950 | 740 | 4390 |
| PH 500L.3 | 690 | 320 | 1020 | 1100 | 5750 |
| PH 500L.4 | 700 | 360 | 1060 | 1370 | 6830 |

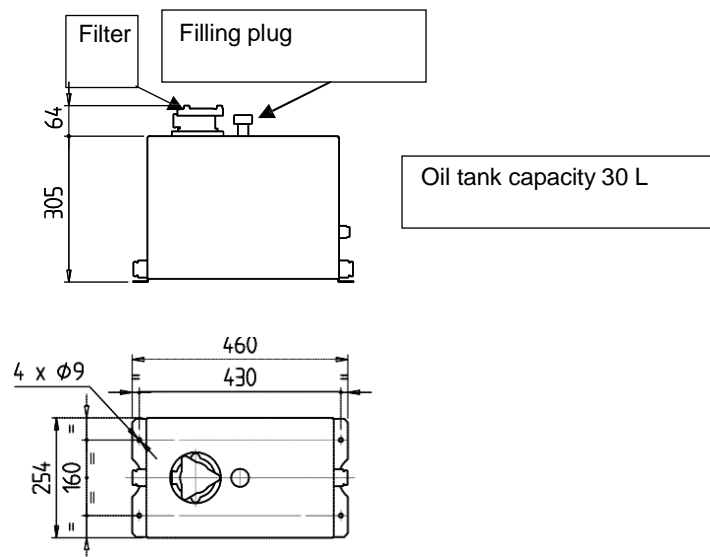
Standard control station



Control station with remote control



Oil tank



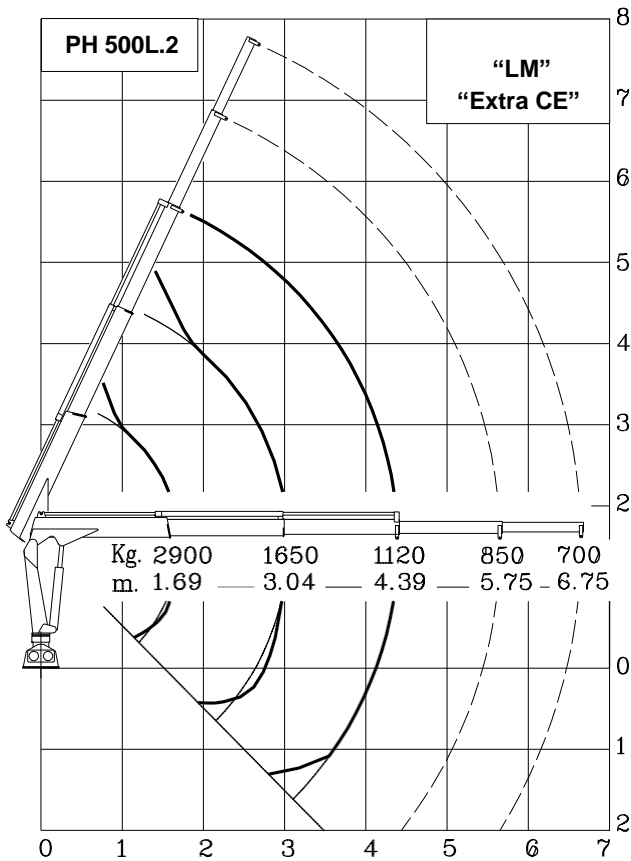
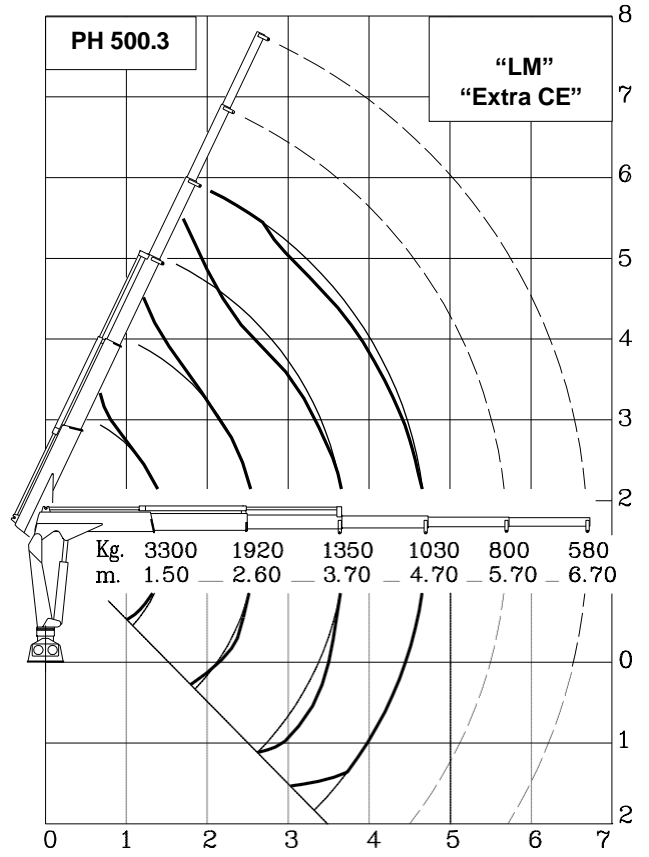
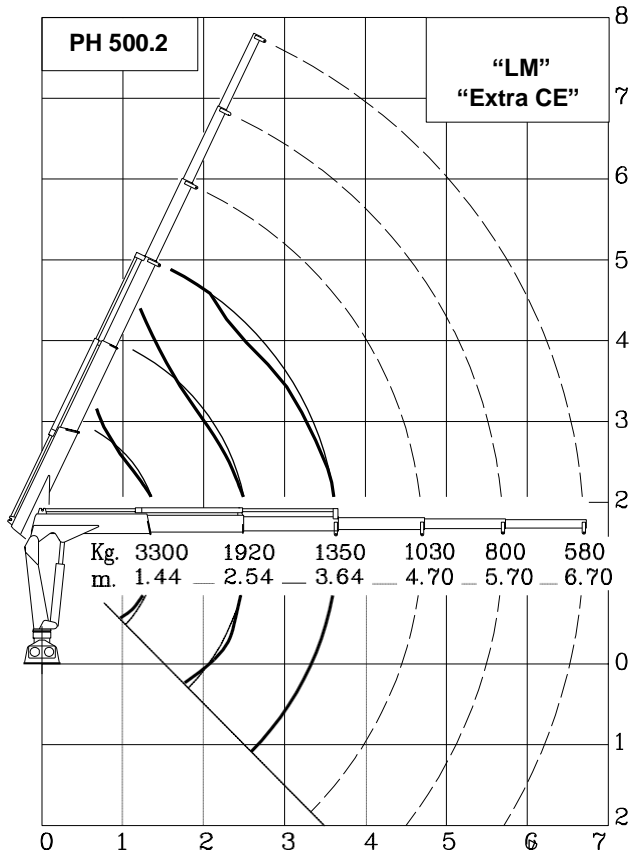
| TECHNICAL DATA | U.M. | VERSION | | | | |
|-------------------------------------|-------|----------|----------|-----------|-----------|-----------|
| | | PH 500.2 | PH 500.3 | PH 500L.2 | PH 500L.3 | PH 500L.4 |
| CRANE RATING | KNm | 48 | | | | |
| STANDARD EXTENSIONS Nr (HYDRAULICS) | N° | 2 | 3 | 2 | 3 | 4 |
| STANDARD OUTREACH | m | 3.64 | 4.70 | 4.39 | 5.75 | 6.83 |
| SLEWING ANGLE | ° | 360° | | | | |
| MAXIMUM ANGLE SLOPE | ° | 15° | | | | |
| SLEWING TORQUE | kNm | 16 | | | | |
| MAX. LIFTING HEIGHT FROM CRANE BASE | m | 4.85 | 5.85 | 5.60 | 6.85 | 7.50 |
| SUGGESTED OIL FLOW | l/min | 15 - 18 | | | | |
| MAX. WORKING PRESSURE | bar | 230 | | | | |
| BASIC CRANE WEIGHT | kg | 470 | 510 | 500 | 550 | 580 |

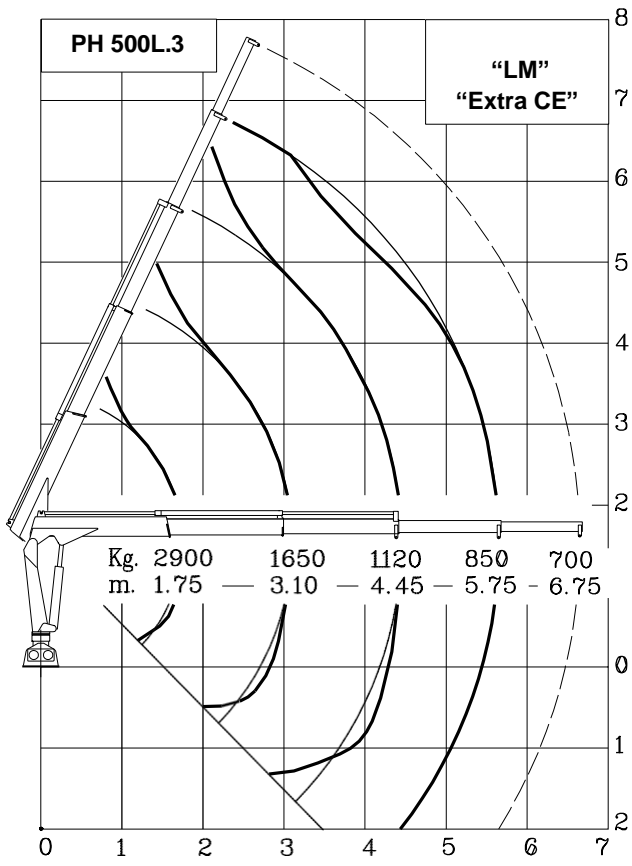
| WINCH SPECIFICATIONS | U.M. | |
|---|-------|---------------------------------|
| MAX. WINCH SINGLE LINE CAPACITY (3 rd LAYER) | kg | 990 ("CE") 1000 (EXTRA "CE") |
| ROPE RAISING SPEED (3 rd LAYER) | m/min | 15 |
| ROPE LOWERING SPEED (3 rd LAYER) | m/min | 20 |
| ROPE DIAMETER | mm | 8 |
| ROPE LENGTH | m | 30 |
| WINCH KIT WEIGHT | kg | 75 |

| OPERATING TIMES | | | | | | | | | | | | |
|------------------|------------------|-----------------|------------------------|-------|--------|--------|--------|-----------------------|-------|--------|--------|--------|
| . SLEW. (rpm) | LIFTING (sec) | LOWER. (sec) | EXTENSION OUT (sec) | | | | | EXTENSION IN (sec) | | | | |
| | | | 500.2 | 500.3 | 500L.2 | 500L.3 | 500L.4 | 500.2 | 500.3 | 500L.2 | 500L.3 | 500L.4 |
| 2.3 | 17 | 12 | 17 | 22 | 20 | 31 | 36 | 10 | 12 | 12 | 18 | 21 |

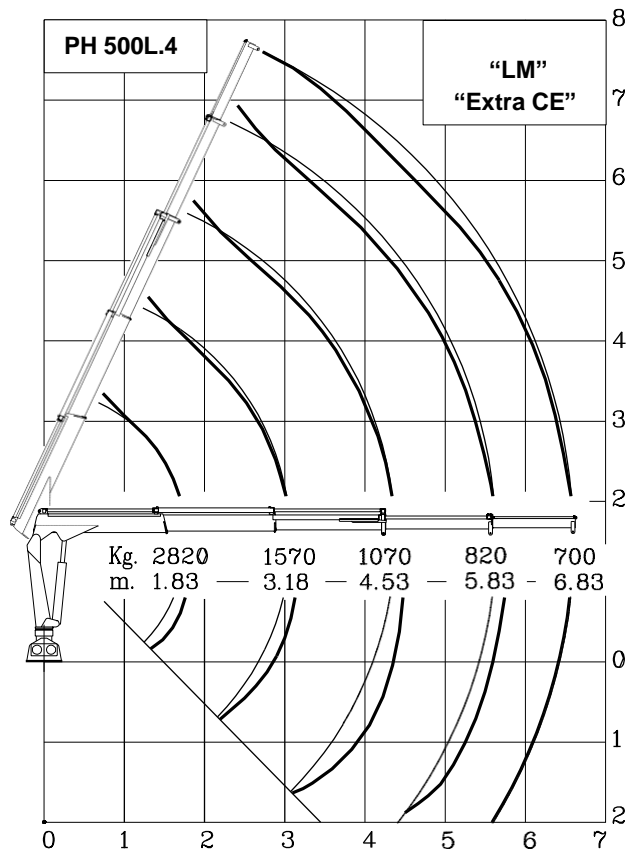
Maximum lifting capacity 990 kg ("CE" version) or 1000 kg (EXTRA "CE" version), in single pull line, without strain limiting device; outreaches unchanged.

Stabilizers: Refer to models 1 EMO/1EHO or 1 EMA/1 EHA on MAXISTAB catalogue.





In the **“LM”** version, the mechanical extensions are not controlled by the load limiter



Lifting class **HC1 – HD4/B3**