

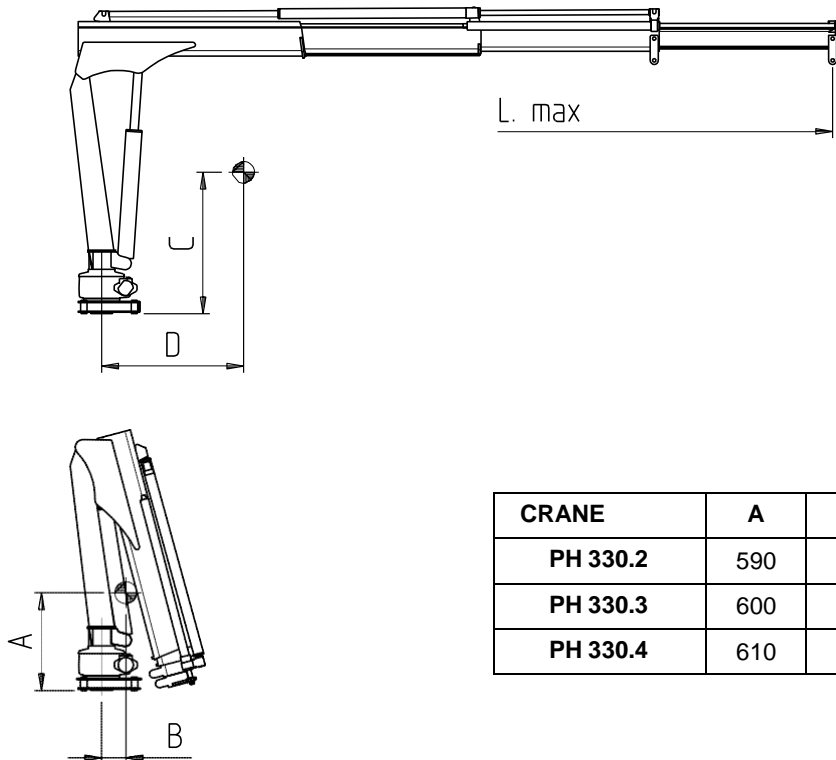
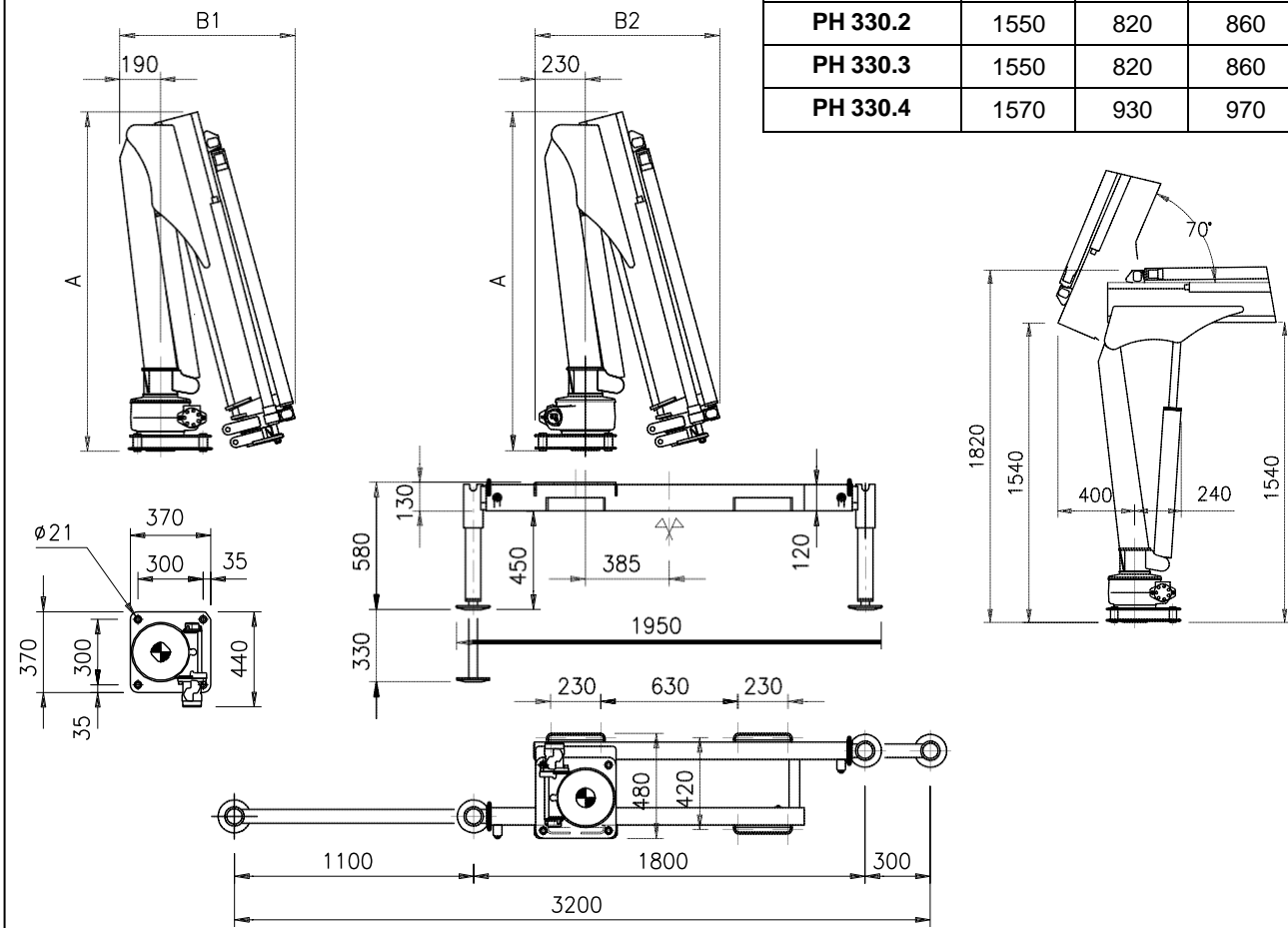


TECHNICAL SHEET



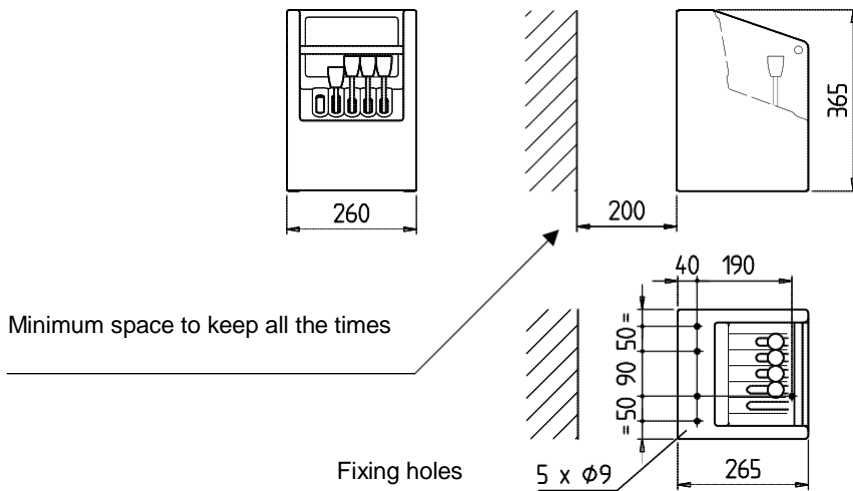
PH330

DIMENSIONS			
CRANE	A	B1	B2
PH 330.2	1550	820	860
PH 330.3	1550	820	860
PH 330.4	1570	930	970

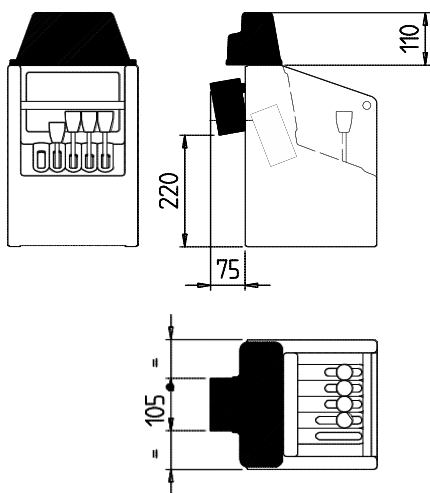


CRANE	A	B	C	D	L max
PH 330.2	590	160	950	630	3300
PH 330.3	600	180	1030	930	4360
PH 330.4	610	200	1080	1230	5360

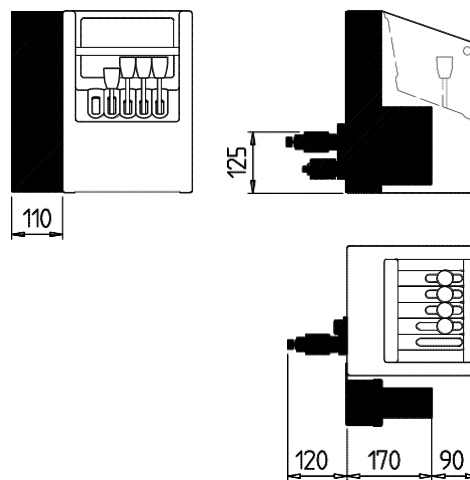
Standard controlstation



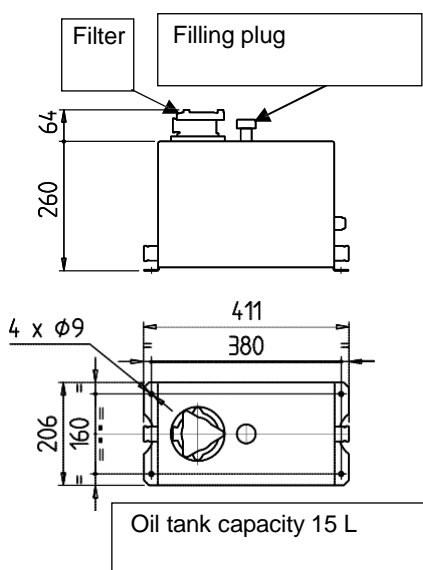
Control station with SCU



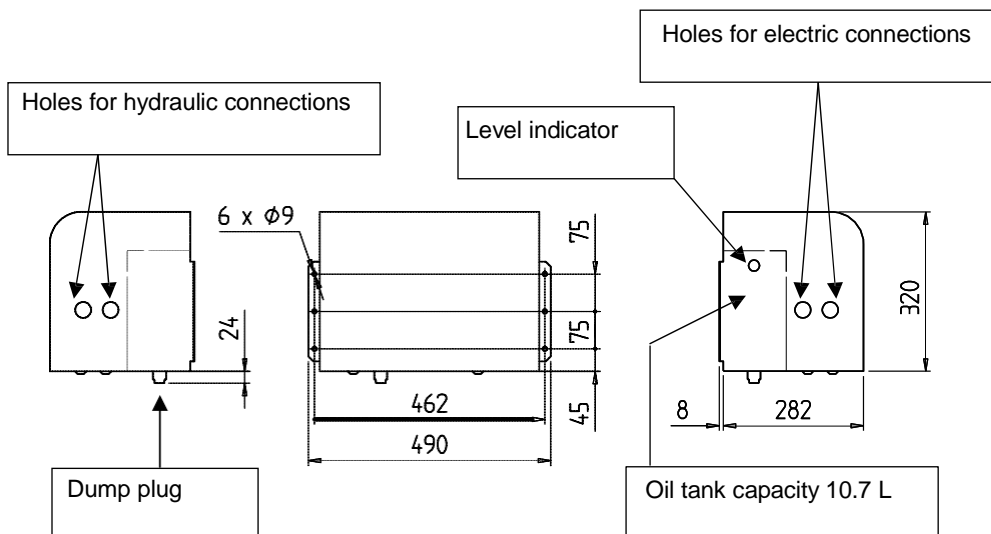
Control station with remote control



Oil tank for H version



Power pack (E version)



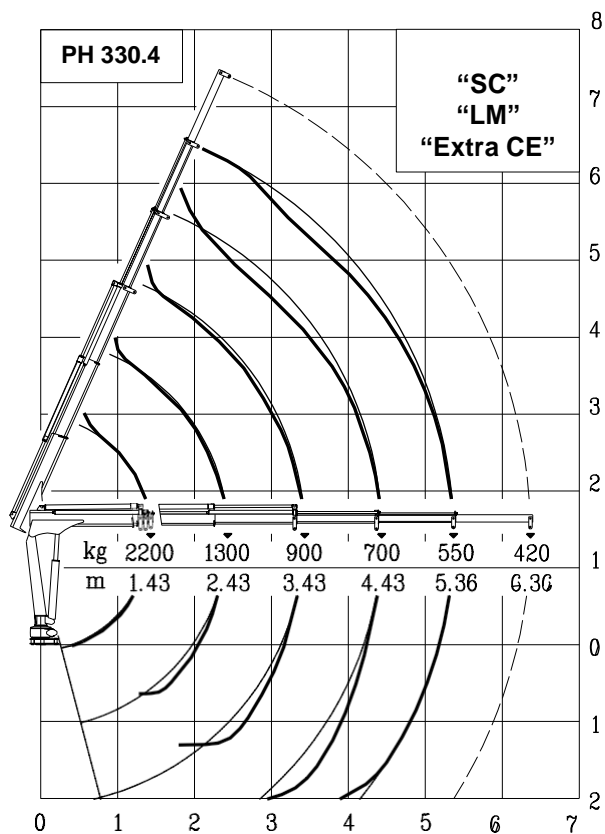
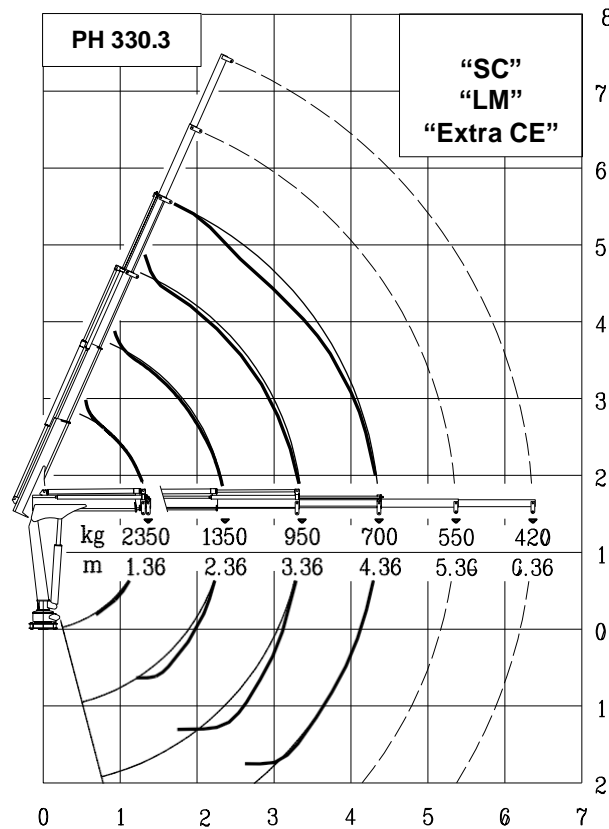
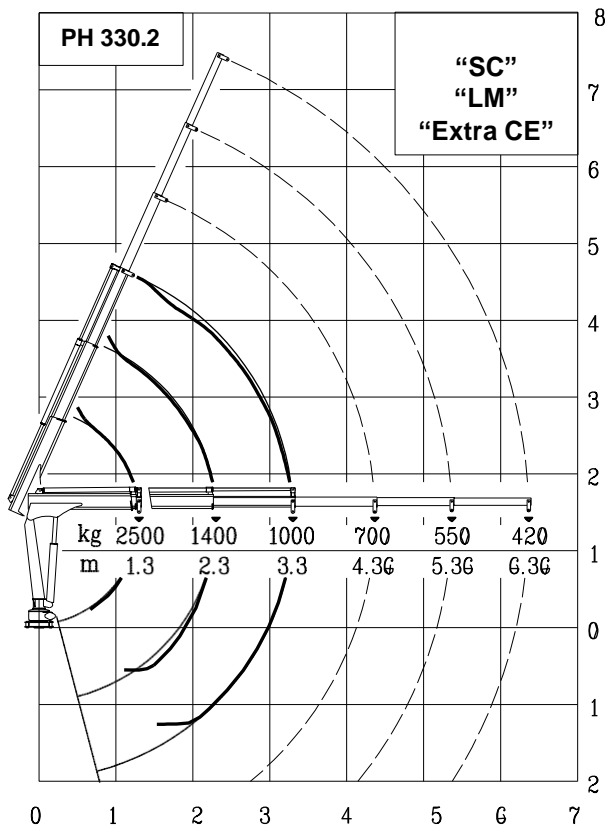
TECHNICAL DATA	U.M.	VERSION		
		PH 330.2	PH 330.3	PH 330.4
CRANE RATING	kNm	32		
STANDARD EXTENSIONS Nr (HYDRAULICS)	N°	2H	3H	4H
STANDARD OUTREACH	m	3.30	4.36	5.36
SLEWING ANGLE	°	360°		
MAXIMUM ANGLE SLOPE	°	5°		
SLEWING TORQUE	kNm	4.2		
MAX. LIFTING HEIGHT FROM CRANE BASE	m	4.50	5.50	6.40
SUGGESTED OIL FLOW	l/min	10÷12		
MAX. WORKING PRESSURE	bar	220		
BASIC CRANE WEIGHT VERS. "H" VERS. "E"	kg	270 290	295 315	325 345
BASE WEIGHT WITH EXTENDABLE STABILIZERS	kg	130÷140		
BEAM WEIGHT WITH 2 EXTENDABLE STABILIZERS	kg	69÷83		
MOTOR ABSORPTION FOR ELECTROHYDR. CRANE 12V	A min/max	80/260	80/260	80/260
MOTOR ABSORPTION FOR ELECTROHYDR. CRANE 24V	A min/max	50/160	50/160	50/160

WINCH SPECIFICATIONS	U.M.	
MAX. WINCH SINGLE LINE CAPACITY (3 rd LAYER)	kg	700
ROPE DIAMETER	mm	7
ROPE LENGTH	m	25
WINCH KIT WEIGHT	kg	70

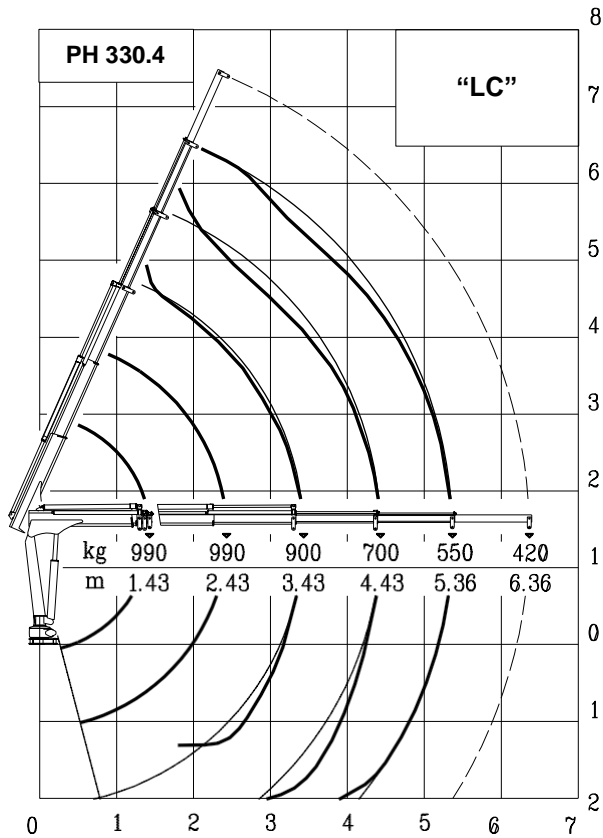
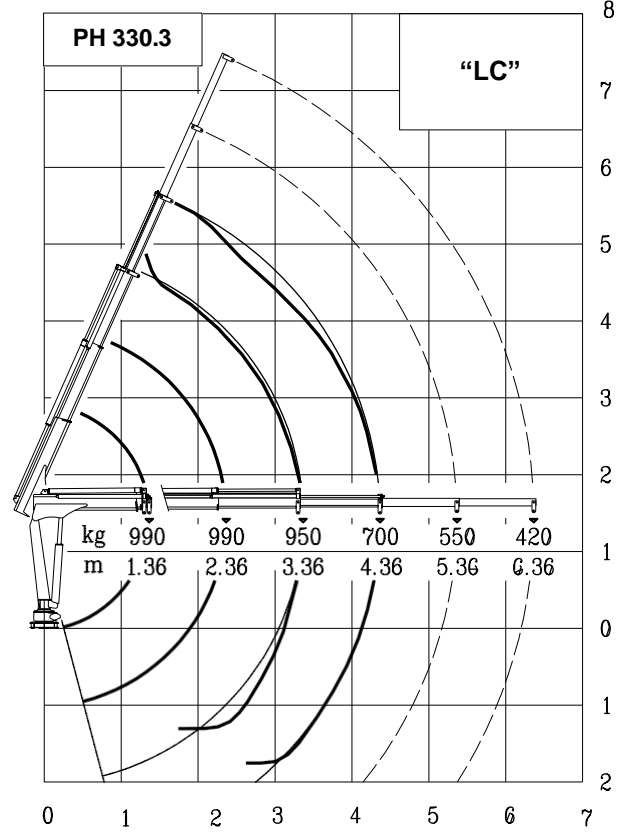
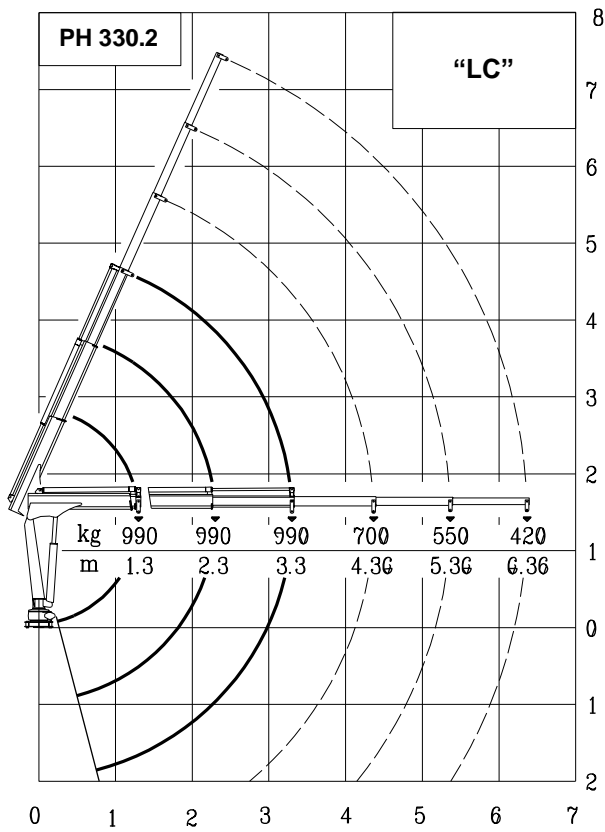
VERSION	DESCRIPTION
"E" 12V	ELECTROHYDRAULIC
"E" 24V	ELECTROHYDRAULIC
"H"	HYDRAULIC

OPERATING TIMES										
VERS.	SLEWING (rpm)	LIFTING (sec)		LOWERING (sec)	EXTENSION OUT (sec)			EXTENSION IN (sec)		
		p min	p max		330.2	330.3	330.4	330.2	330.3	330.4
"E" 12/24V	2	25	38	14	25	32	42	14	19	24
"H" (PTO)	2.2	21		14	25	32	42	14	19	24

min. working pressure
max. working pressure



In the “SC” and “LM” versions, the mechanical extensions are not controlled by the load limiter



Lifting class **HC1 – HD4/B2**